

# CHRYSLER

## Y160-PHT Y165-PHT Y166-PHT

You must have 2 already programmed Sentry™ Keys to make SPARE KEYS. If you only have one programmed key OR if ALL the keys are lost, other equipment is required to program a new key.

**NOTE:** 2010 & later models that use Y166-PHT cannot be programmed using the on-board programming method.

### CREATING SPARE KEYS

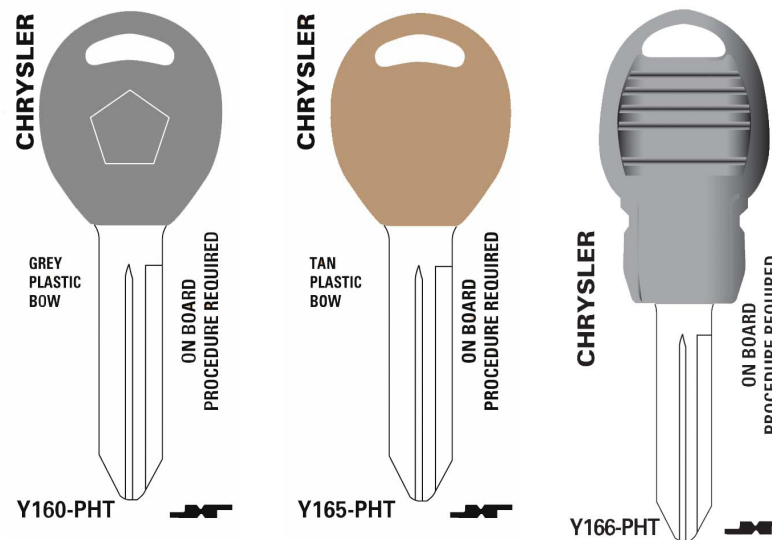
The vehicle can only accept up to 8 total Sentry™ Keys.

1. Cut mechanical code on the Sentry™ Key blank. Use Jet No. Y160-PHT or Y165-PHT or Y166-PHT as applicable, and set this duplicate aside for the time being.
2. Insert one of the two preprogrammed Sentry™ Keys into the ignition lock and turn it on the "ON" position.
3. Leave ignition in the "ON" position for 5 to 15 seconds and now turn to "OFF" & remove key.
4. Within 15 seconds, insert the 2nd preprogrammed key into the ignition and turn it "ON".
5. In about 10 seconds the Sentry™ Key Immobilizer System is put into the Customer Learn Mode. A single chime will sound and/or the Vehicle Theft Security System Lamp flashes. The Learn Mode remains "ON" for 60 seconds. Use this time to turn the key to "OFF" and remove it. AND.....
6. Insert the new duplicate key from Step 1 into the ignition and turn it "ON" for about 10 seconds.
7. After about 10 seconds have passed the chime will sound and the Vehicle Theft Security System Lamp will stop flashing. Wait 5 seconds for the Security Lamp to turn on again for 3 seconds and then turn off again and then turn the key to "OFF" position. The new duplicate is now programmed.
8. To program additional Sentry™ Keys, follow Steps 1 thru 7. Remember, the vehicle can only accept up to 8 total keys.

**NOTICE:** If someone tries to use a 'wrong key' or bypass the cylinder, the Sentry™ Key Immobilizer Module will fail to identify a recognizable Transponder Identifier. Two additional unsuccessful tries causes a message to be sent to the Powertrain Control Module which in turn disarms the vehicle's fuel system. Continued failed attempts with the wrong key will also disarm the starter. The Chrysler dealer may have to be contacted for service.

**We suggest that you consult the customer's vehicle owners manual before following ANY procedure you believe to be correct.**

### JET CHRYSLER TRANSPONDER KEYS



### FORD

You will encounter FORD 1 Key System AND Ford 2 Key System Vehicles. You may be able to predetermine which of the two PATS Systems applies to the vehicle at hand by utilizing the following two charts. Early model year production may deviate.

#### 1 KEY SYSTEM APPLICATIONS:

- 1997 (and earlier) Ford:** Expedition, Mustang and Taurus.  
**Mercury:** Sable - **Panoz:** AIV roadster  
**1998 Ford:** Contour (2/1/98 prod. & earlier) and Expedition.  
**Lincoln:** Navigator  
**Mercury:** Mystique (2/1/98 prod. & earlier)

(continued on the next page)

# FORD (cont'd)

## 1 Key System Procedure

**Duplicating:** Place original key in ignition and turn to "ON" position. On some models a theft security light should turn on. Wait a few seconds until light turns off. Remove original key and insert new duplicate transponder key in ignition and turn to "ON" position. (Removal of original and insertion of duplicate must be done within 10 seconds). Theft security light will turn on for a few seconds.

When light turns off, duplicate key is programmed. A maximum of 16 total keys can operate these vehicles.

**Originating:** Make an operating transponder key by code or fitting. Insert new transponder key in ignition and turn to "ON" position. Theft security light will stay on for 10 to 15 minutes. (Some models may use a flashing light). When the theft security light turns off, turn new transponder key to "OFF" position. Repeat this two more times. (Each cycle must be started within 5 minutes after the theft security light turns off). After third cycle, new key will operate vehicle. Any key which formerly operated the ignition will now be inoperative.

## 2 Key System Applications:

**1998 Ford:** Contour (2/2/98 prod. & later), Crown Victoria, Explorer, Mustang and Taurus.

**Lincoln:** Continental and Town Car

**Mercury:** Mystique (2/2/98 prod. & later), Grand Marquis, Mountaineer, & Sable – **Panoz:** AIV roadster

**1999 Ford:** Contour, Expedition, F-Series, Ranger V6 and Windstar.

**Lincoln:** Navigator - **Mazda:** B3000/B4000 pickup

**Mercury:** Cougar and Mystique.

All Transponder equipped vehicles using the Ford On-board procedure from 2000 on.

## 2 Key System Procedure

**Duplicating:** TWO ORIGINAL KEYS MUST BE PRESENT. Duplicate correct cuts onto a new transponder key. Insert first original key into ignition lock and turn to "ON" position for 3 to 5 seconds. Remove first key from ignition lock. Within 5 seconds, insert a second, different original key into ignition lock and turn to "ON" position for 3 to 5 seconds.

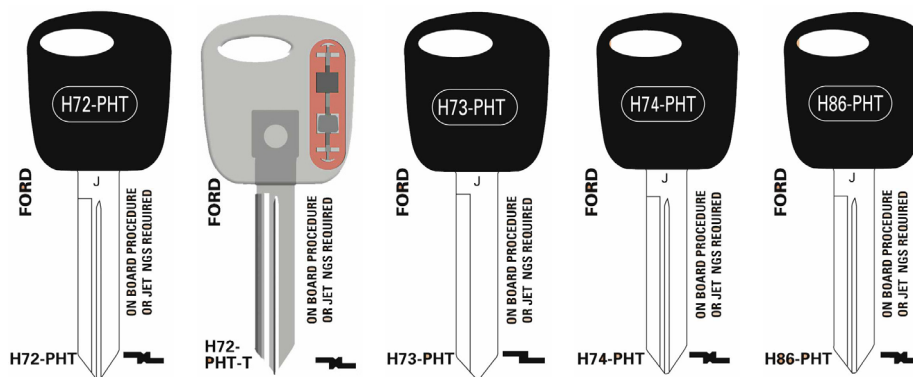
## 2 Key System Procedure (cont'd)

Remove the second original key from ignition lock. Within 10 seconds, insert the new duplicate key into ignition lock. Turn new key to "ON" position for 1 to 6 seconds. Turn to OFF and remove the key from the ignition lock. After 5 seconds, if successfully programmed, the vehicle will start. On vehicles with a theft indicator light, the light will illuminate for 3 seconds and then turn off to indicate successful programming.

Repeat entire sequence if additional new duplicate keys are being programmed. A maximum of 8 total keys can operate these vehicles.

If only one original key is available or if all keys are lost, programming requires a New Generation Star Tester (NGS).

**We suggest that you consult the customer's vehicle owners manual before following any procedure you believe to be correct.**



By using the NGS MACH II or NGS-PC unit, Ford transponder keys can be made without an original key.

The NGS plugs into the vehicle and will create a new key.

The NGS also duplicates remotes.

# GM PASS-Key III/III+ ®

For all transponder equipped GM vehicles made for the US market EXCEPT Cadillac Catera, Chevy Aveo & City Express, Pontiac G3, GTO, & Vibe & Saturn Astra & for all transponder equipped GM vehicles made for the Canadian market prior to 2001 EXCEPT Cadillac Catera. Excludes '17+ models that require 2 keys to program!

**NOTE:** Vehicles made for sale in Canada (maple leaf decal on door jamb and gauges primarily in km/h) cannot be programmed on-board from approximately 2001 & up when there are less than 2 keys that are already programmed. T-Code or Tech 2 is required if only 1 key or no keys are available.

## **LEARNING ADDITIONAL PASS-Key III/III+ IGNITION KEYS (QUICK LEARN)** **Use this procedure if you have only 1 programmed key.**

The first key used in this procedure must **not** be a valet key (gray in color). A valet key will **not** allow you to learn additional keys. Additional keys (up to a total of 10 or on some models, 8 non-remote head transponder keys) may be programmed using the following procedure if a valid (learned) key is available for that vehicle.

Less than 10 remote head transponder keys (either 8 keys or on some models, 4 keys) can be programmed due to limits on the number of remotes per car.

To "learn" another PASS-Key®, it is necessary to first create a duplicate of the mechanical cut of the current key. The ignition key being learned must be read by the PASS-Key III/III+® module in the following sequence. A driver's key must be used to "learn" any additional keys. This procedure is for "learning" additional keys only.

1. Insert the valid normal driver's key (black in color) and start the engine OR on the Chevy Spark, Caprice PPV, & on vehicles using the JET B116-PHT & B119-PHT high security (sidewinder-type) keys, turn the key to the "ON/RUN" position for 5 seconds.

2. Once the vehicle has started, turn the ignition switch to the off position and remove the key OR after 5 seconds in the "ON/RUN" position, turn the key to OFF and remove from ignition.

## **IF THE VEHICLE DOES NOT START USE THE "AUTO LEARN" PROCEDURE.**

3. Insert the key to be "learned" and rotate it to "ON" (RUN) within five seconds of removing the previously used key.

4. The "Security" telltale will turn off once the key has been learned. It may not be apparent that the "Security" telltale went on due to how quick it "learns" the new key.

5. Repeat these steps to program additional keys now if customer so desires

## **AUTO LEARN PROCEDURE**

### **Replacing Lost PASS-Key III/III+® Ignition keys** **Use this procedure if you have no programmed keys.**

To replace a lost PASS-Key III/III+® Transponder key if all currently programmed keys are lost, it is necessary to determine the mechanical cut. Mechanical codes are recorded on the vehicle invoice. If these codes are available, use them to create a new key. If they are not, follow the procedure below.

The mechanical cut must be determined first. The mechanical cut can be determined from the key code on the ignition lock cylinder or from the original key "knock outs." If the mechanical cut cannot be determined, the ignition lock cylinder must be replaced.

To "learn" the new PASS-Key III/III+® key, use the following procedure:

1. Insert a valid mechanical cut key and rotate it to "ON" (RUN).
2. The "SECURITY" telltale will remain on solid for the length of the auto-learn timer (10-11 minutes).
3. When the auto-timer expires, the telltale will turn off.
4. Once the telltale turns off, you have 1 minute to start the next step.
5. Turn ignition to OFF for 5 seconds and repeat Steps 1-4 two more times (total of 30-33 minutes in 3 cycles).
6. When the "SECURITY" telltale goes off for the third time, turn the key to OFF for 10 seconds and then back to ON (RUN).

The new key is now programmed into the car.

7. Remove the key from the ignition and then reinsert the newly learned key into ignition cylinder and turn to "ON" (RUN). The "SECURITY" telltale should remain off indicating the new key has been learned. All previously stored codes will be erased.
8. Any additional keys (up to a maximum of 10) can be learned using the "Learning PASS-Key III/III+® Ignition Keys (Quick Learn)" procedure in this section.

**We suggest that you consult the customer's vehicle owners manual before following ANY PROCEDURE you believe to be correct.**

# GM PASS-Key III+ ®

## 2 Key System

For all transponder equipped GM vehicles made for the US market that require 2 keys to program starting with the 2017 model year. EXCLUDES Chevrolet City Express. EXCLUDES vehicles made for the Canadian market.

**NOTE:** Vehicles made for sale in Canada (maple leaf decal on door jamb and gauges primarily in km/h) cannot be programmed on-board from approximately 2001 & up when there are less than 2 keys that are already programmed. T-Code or Tech 2 is required if only 1 key or no keys are available.

### **LEARNING ADDITIONAL PASS-Key III+ IGNITION KEYS (QUICK LEARN)** **You must have 2 already programmed keys for this procedure.**

The first 2 keys used in this procedure **must not** be a valet key (gray in color). A valet key will **not allow** you to learn additional keys.

Additional keys (up to a total of 8 transponder keys) may be programmed using the following procedure if 2 valid (learned) keys are available for that vehicle.

To "learn" another PASS-Key®, it is necessary to first create a duplicate of the mechanical cut of the current key. The ignition key being learned must be read by the PASS-Key III+® module in the following sequence. Two master keys must be used to "learn" any additional keys.

1. Insert the valid normal driver's key (black in color) & turn the key to the "ON/RUN" position for 5 seconds.
2. After 5 seconds in the "ON/RUN" position, turn the key to "LOCK/OFF" and remove from ignition.
3. Within 5 seconds, insert the second valid normal driver's key (black in color) and turn the key to the "ON/RUN" position for 5 seconds.
4. After 5 seconds in the "ON/RUN" position, turn the key to "LOCK/OFF" and remove from ignition.
5. Insert the key to be "learned" and rotate it to "ON" (RUN) within five seconds of removing the previously used key.

6. The "Security" telltale will turn off once the key has been learned. It may not be apparent that the "Security" telltale went on due to how quick it "learns" the new key.
7. Repeat these steps to program additional keys now if customer so desires.

## **AUTO LEARN PROCEDURE**

### **Replacing Lost PASS-Key III+® Ignition keys**

To replace a lost PASS-Key III+® Transponder key if all currently programmed keys are lost or if only 1 key is available, it is necessary to determine the mechanical cut. Mechanical codes are recorded on the vehicle invoice. If these codes are available, use them to create a new key. If they are not, follow the procedure below.

The mechanical cut must be determined first. The mechanical cut can be determined from the key code on the ignition lock cylinder or from the original key "knock outs." If the mechanical cut cannot be determined, the ignition lock cylinder must be replaced.

To "learn" the new PASS-Key III+® key, use the following procedure:  
**YOU MUST PROGRAM AT LEAST 2 PASS-Key III+® KEYS IN THIS PROCEDURE.**

1. Insert a valid mechanical cut key and rotate it to "ON" (RUN).
2. The "SECURITY" telltale will remain on solid for the length of the auto-learn timer (10-11 minutes).
3. When the auto-timer expires, the telltale will turn off.
4. Once the telltale turns off, you have 1 minute to start the next step.
5. Turn ignition to OFF for 5 seconds and repeat Steps 1-4 two more times (total of 30-33 minutes in 3 cycles).
6. When the "SECURITY" telltale goes off for the third time, turn the key to OFF for 10 seconds and then back to ON (RUN). The key is now learned & all previously programmed keys have been erased.
7. Remove the first key and insert the second valid mechanical cut key & rotate it to "ON" (RUN). When the "SECURITY" telltale goes off, the second key is programmed and the cycle is now closed.
8. Any additional keys (up to a maximum of 8) can be learned using the "Learning PASS-Key III+® Ignition Keys (Quick Learn)" procedure in this section.

**We suggest that you consult the customer's vehicle owners manual before following ANY PROCEDURE you believe to be correct.**

# GM PASS-Key III/III+ ®

For all transponder equipped GM vehicles made for sale in Canada from 2001 & later EXCEPT Cadillac Catera, Chevy Aveo, City Express, Epica, & Optra, Pontiac G3, G3 Wave, Wave, & Vibe & Saturn Astra.

**NOTE:** Vehicles made for sale in Canada (maple leaf decal on door jamb and gauges primarily in km/h) cannot be programmed on-board from approximately 2001 & up when there are less than 2 keys that are already programmed. T-Code or Tech 2 is required if only 1 key or no keys are available.

## LEARNING ADDITIONAL PASS-Key III/III+ IGNITION KEYS (QUICK LEARN) You must have 2 already programmed keys for this procedure.

The first 2 keys used in this procedure must **not** be a valet key (gray in color). A valet key will **not** allow you to learn additional keys. Additional keys (up to a total of 10 or on some models, 8 non-remote head transponder keys) may be programmed using the following procedure if 2 valid (learned) keys are available for that vehicle. Less than 10 remote head transponder keys (either 8 keys or on some models, 4 keys) can be programmed due to limits on the number of remotes per car.

To "learn" another PASS-Key®, it is necessary to first create a duplicate of the mechanical cut of the current key. The ignition key being learned must be read by the PASS-Key III/III+® module in the following sequence. Two master keys must be used to "learn" any additional keys.

1. Insert the valid normal driver's key (black in color) and start the engine OR on the Chevy Spark, Caprice PPV, & on vehicles using the JET B116-PHT & B119-PHT high security (sidewinder-type) keys, turn the key to the "ON/RUN" position for 5 seconds.
2. Once the vehicle has started, turn the ignition switch to the off position and remove the key OR after 5 seconds in the "ON/RUN" position, turn the key to OFF and remove from ignition.
3. Insert the second valid normal driver's key (black in color) and start the engine OR on the Chevy Spark, Caprice PPV, & on vehicles using the Jet B116-PHT & B119-PHT high security (sidewinder-type) keys, turn the key to the "ON/RUN" position for 5 seconds.
4. Once the vehicle has started, turn the ignition switch to the off position and remove the key OR after 5 seconds in the "ON/RUN" position, turn the key to OFF and remove from ignition.

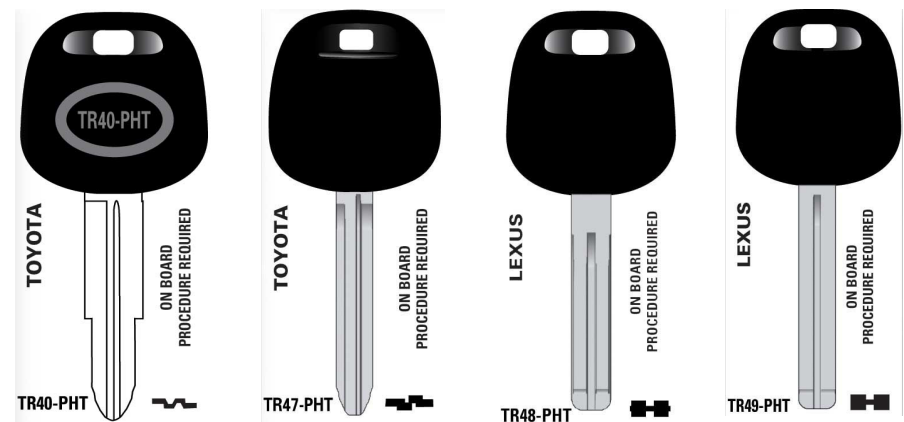
5. Insert the key to be "learned" and rotate it to "ON" (RUN) within five seconds of removing the previously used key.
6. The "Security" telltale will turn off once the key has been learned. It may not be apparent that the "Security" telltale went on due to how quick it "learns" the new key.
7. Repeat these steps to program additional keys now if customer so desires.

**We suggest that you consult the customer's vehicle owners manual before following ANY PROCEDURE you believe to be correct.**

## LEXUS - TOYOTA

### ADDITIONAL MASTER KEY PROGRAMMING FOR LEXUS - TOYOTA VEHICLES METHOD #1

APPLICABLE FOR ALL LEXUS and TOYOTA models using the following keys - EXCEPT for 1997 Lexus LS400 and 2001 - 2003 Toyota Prius



FOR CARS WHERE YOU WANT TO CREATE A SPARE KEY (A total of ten (10) keys is allowed)

Before starting, press and release the Brake & Accelerator pedals at the SAME TIME

1. Place an already programmed Master key in the keyway. (Do Not Turn On)
2. Press the Gas pedal five (5) times.
3. Press the Brake pedal six (6) times.

**(continued on the next page)**

# LEXUS - TOYOTA (cont'd)

4. Pull out the key.
5. Insert the new key and DO NOT turn it on.
6. Press the Gas pedal just one (1) time and wait about a minute until security light stops blinking.
7. Remove the key and Press Brake pedal one (1) time.  
The cycle is now closed.

**The programming mode will end after ten (10) more seconds.**

## ADDITIONAL MASTER KEY PROGRAMMING FOR LEXUS - TOYOTA VEHICLES METHOD #2

APPLICABLE FOR 1997 LEXUS LS400, 2001-03 TOYOTA PRIUS, and  
2003-07 Toyota Sequoia

- A. Use TR49-PHT for LEXUS LS400
- B. Use TR47-PHT for TOYOTA PRIUS
- C. Use TR51-PHT for TOYOTA SEQUOIA

FOR CARS WHERE YOU WANT TO CREATE A SPARE KEY  
(A total of ten (10) keys is allowed on the LS400 while a total of six (6)  
Keys is allowed on the Prius & Sequoia).

1. Get into the car and sit in the driver's seat. Make sure there is no key in the ignition lock.
2. Close all the doors but do not lock them.
3. Insert the already programmed Master Transponder key into the ignition.
4. Turn the ignition switch from "LOCK" to "ON" five (5) times, very quickly. (Leave in "ON" position.)
5. Open and close the driver's door six (6) times, very quickly.
6. After the sixth (6th) time, IMMEDIATELY remove the Master key from the ignition.
7. Insert the new key to be programmed within ten (10) seconds of removing the existing key and turn to "ON" immediately.
8. Leave the key in the "ON" position for approximately two (2) minutes until the theft light turns off.

# LEXUS - TOYOTA

9. Remove the key. It should now be programmed into the ECU.
10. If you need to program another key, insert the next key within ten (10) seconds of removing the previous key.
11. When you finish programming new keys, open and close the driver's door once. This ends the programming mode.

**We suggest that you consult the customer's vehicle owners manual before following ANY PROCEDURE you believe to be correct.**

## LEXUS - SCION - TOYOTA

### ADDITIONAL MASTER KEY PROGRAMMING FOR LEXUS - SCION - TOYOTA VEHICLES METHOD #3

APPLICABLE FOR

LEXUS:	SCION:	TOYOTA:
ES330 04-06	TC 05-07	4RUNNER 03-09
GX470 03-09		AVALON 05-07
LS430 01-06		CAMRY* 03-06
LX470 03-07		COROLLA 05-06
RX330 04-06		HIGHLANDER 04-07
RX350 07-09		LAND CRUISER 03-07
RX400h 06-08		MATRIX** 05-MID 07
SC430 02-10		RAV4*** 04-06
		SIENNA 04-07
		SOLARA** 04-07
		TACOMA 05-07
		YARIS 2007

Use TR60-PHT for the above mentioned Lexus models.

Use TR51-PHT for the above mentioned Scion & Toyota models.

\* ONLY applies to models that use TR51-PHT. Does NOT apply to models using TR47-PHT.

\*\* ONLY applies to models that use T-Code System 2. Some 2007 models use T-Code System 4. Does NOT apply to models using T-Code System 4.

\*\*\* ONLY applies to models that use T-Code System 2. Some 2006 models use T-Code System 4. Does NOT apply to models using T-Code System 4.

**(continued on the next page)**

# LEXUS - SCION - TOYOTA (cont'd)

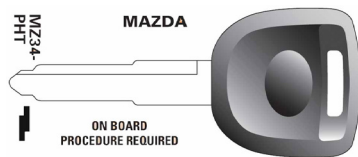
FOR CARS WHERE YOU WANT TO CREATE A SPARE KEY  
(A total of eight (8) keys is allowed).

1. Get into the car and sit in the driver's seat. Make sure there is no key in the ignition lock.
2. Close all the doors but do not lock them.
3. Insert and remove the already programmed Master transponder key into the ignition lock four (4) times.
4. Insert the already programmed Master transponder key into the ignition lock but DO NOT turn the key.
5. Open & close the driver's door 6 times, very fast.
6. Then, immediately remove the Master key from the ignition lock. The security light will remain solid.
7. Insert the new key to be programmed within 10 seconds of removing the existing key and wait about 1 minute until the security light goes out.
8. Remove and insert the new key in the ignition lock. The security light will go out confirming that key programming is complete.

## MAZDA

You must have 2 already programmed Master Keys to make SPARE KEYS. If you only have one programmed key OR if ALL the keys are lost, other equipment is required to program a new key.

APPLICABLE FOR ALL MAZDA  
models using the MZ34-PHT key:



TO CREATE A SPARE KEY (A maximum of 8 keys is allowed)

1. Duplicate correct cuts onto the new transponder key.
2. Insert the first already programmed Master key into the ignition and turn to "ON". Wait for the Security light to go out (about 5 seconds) and remove key.
3. Within 5 seconds, insert the second already programmed key into the ignition and turn to "ON". Wait for the Security light to go out (about 5 seconds) and remove key.

## MAZDA (cont'd)

4. Within 5 seconds, insert the new key to be programmed into the ignition and turn to "ON". Wait for the Security light to go out (about 5 seconds) and remove key.
5. Try the new key and confirm that the car starts.

**The programming mode will end after ten (10) more seconds.**

## MITSUBISHI

You must have 2 already programmed Master keys in order to make additional keys. If you only have one already programmed key OR if ALL keys are lost, other equipment is required to program a new key.

Applicable for all 2001 & later MITSUBISHI models EXCEPT the Mitsubishi Raider.

Also applicable on Chrysler Sebring Coupe & Dodge Stratus Coupe.

**Note:** This procedure may NOT work in all vehicles made for sale in Canada.

1. Duplicate correct cuts onto the new transponder key.
2. Insert the first already programmed key into the ignition and turn to "ON" for 5 seconds and then turn to "OFF" and remove the key.
3. Within 7 seconds, insert the second already programmed key into the ignition and turn to "ON" until either the theft-alarm indicator blinks twice or the immobilizer indicator starts blinking and then turn to "OFF" and remove the key.
4. Within 7 seconds, insert the new key to be programmed into the ignition and turn to "ON". The theft-alarm indicator or immobilizer indicator will come on for between 3-30 seconds and then go out to indicate that the key has now been registered by the car. If an error occurs, the theft-alarm indicator will blink 3 times or the immobilizer indicator will go out during the procedure.
5. Remove the new key, reinsert into the ignition and turn to "Start". The car should now start.
6. Repeat the process from the beginning if additional keys are needed.

A maximum of 8 total keys can be programmed into these vehicles.